



Block 3, No.1, Area 9, Nasr City, Cairo ,
Egypt.

Telephone: +2 02 21715018

Cell: +2 01001553085

Fax: +2 2 02 21715018

P-mail: dr.meselhy@waveegypt.com

E-mail: admin@waveegypt.com

www.waveegypt.com

Wave Consulting Group Portfolio



Wing of Architectural and Value Engineering
Dr.Mohamed Meselhy



www.waveegypt.com



Wing of Architectural and Value Engineering
Dr. Mohamed Mesehy

wave Consulting
Portfolio

Contents

About wave architectre 05.....10

What we do 11.....32

Our project 33.....92

Contact Us 91.....92

About wave Consulting Group

About 12 years ago, Dr. Mohamed Meselhy (Ph.D.in Project Management, M.Sc. in Architectural Engineering, B.Sc of Architectural Engineering) Established WAVE (Wing of Architecture and Value Engineering) , a fast growing Engineering firm, located in Cairo, Egypt., which provided Engineering services to varies number for buildings such as, Commercial, Residential, Institutional, Hospitality and Educational buildings.

On its early years of the Egyptian market, WAVE earned the recognition as one of the most respected firms that offers a full range of Engineering services including Architecture, Interior Design, Landscaping ,Computer Generated Working Drawings, 3D Computer Generated Visual Presentations and On-Site Project Observation.

In the year 2007 , WAVE insisted to make a significant contribution to the architectural field by adopting the -Value Engineering- ideas, Reducing the cost & Improving quality became WAVEs new approach .

Shortly ,WAVE cooperated with many consultants who are committed to sustainable principles and Green architecture concepts at every level of design.

Together , all the team of WAVE produce designs which are exquisite and unique to each client because they strongly believe that architecture is more than just a job.

WAVE believes that, The Team, is the most valued resource ,therefore while (Wave Team) work hard, they feel part of something creative and valuable.

We are driven to provide unique aesthetic values to each and every project creating a style unlike any other while adding an element of substance and meaning. We do more than provide great design, we go one better by creating the ability to evoke emotion by the visitor beckoning them to return again and again.

WAVE specializes in designing a variety of destinations, including retail and mixed-use developments, restaurants, hotels and resorts, and corporate office environments. Our projects have involved uncommon strategies and innovative designs to meet our clients goals.

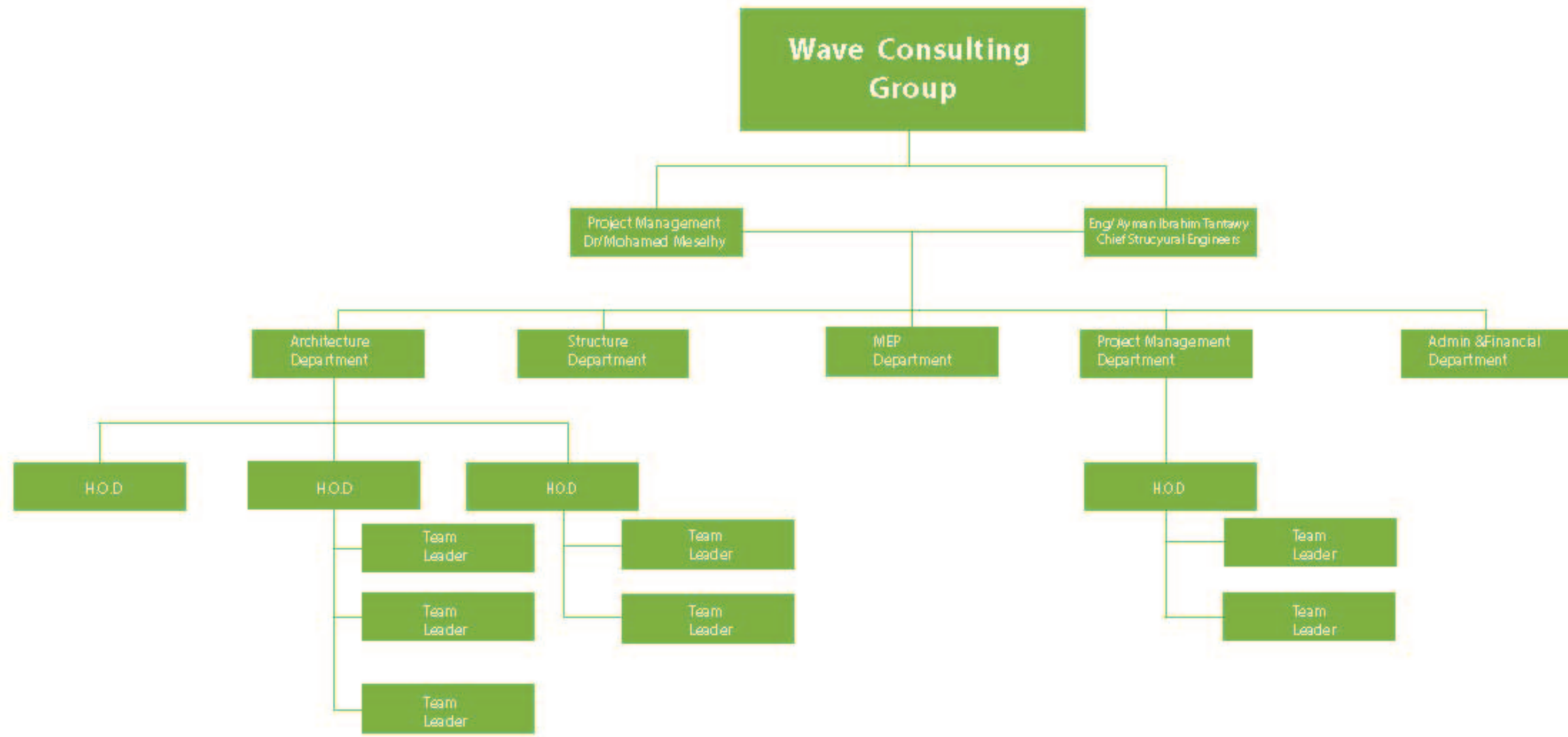
Our award-winning team collaborates intensely to achieve exceptional results. Whatever the goal, we dedicate our diverse range of expertise to exceed expectations, from conception through construction, adding value and optimizing the investment

DR/ Mohamed Said Meselhy
Ph.D., M.Sc., B.Sc.
Founder & CEO

Associated Professor of Architecture.
Faculty of Engineering , Fayoum University , Egypt.

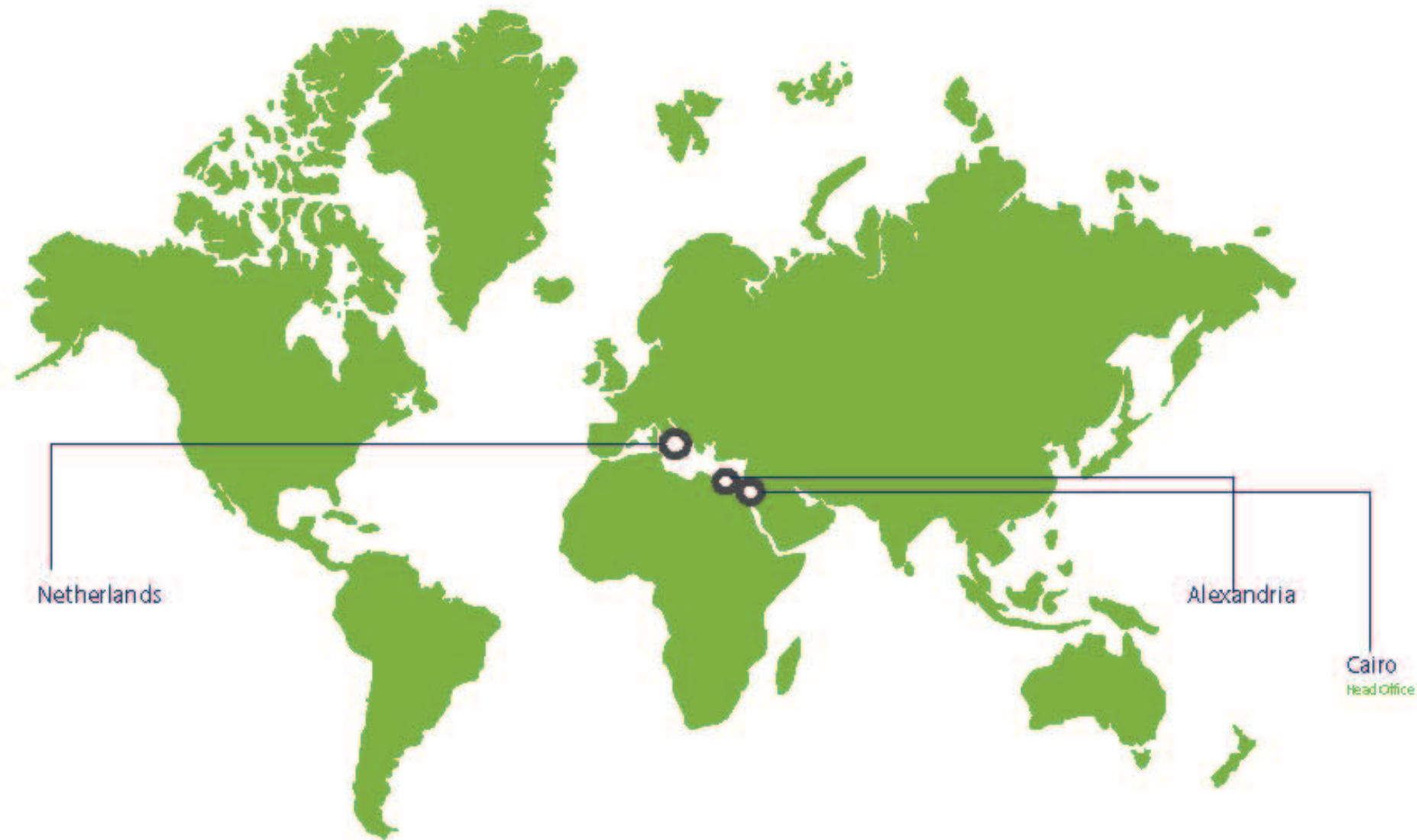


Ayman Ibrahim Tantawy
Chief Structural Engineers
Chairman





www.waveegypt.com



Cairo Head Office

Address:
Block 3, No. 1, Area 9, Nasr City, Cairo , Egypt.
Telephone: +2 02 24715018
Cell: +2 01001553085
Fax: +2 02 24715018

Alexandria Office:

Telephone: 01156363492
a.tantawy@waveegypt.com

Netherlands Office:

Address:Hengelolaan, 932
2544GK, The Hauge
Netherlands
Telephone: +31 642756290

What We Do

- Architectural Services
- Interior Design Services
- Sustainability Planning:
- Structural Design and Assessment
- Electrical Design



Architectural Services

- Schematic Design
- Design Development
- Construction Documents
- Bidding and Negotiation
- Construction Administration

Concept Planning:

- Site analysis and selection
- pre-Design services
- code and local ordinance review

Site Analysis and selection

- Site strategy and development
- Site planning
- Existing facilities surveys



Interior Design Services

- Design of custom , Lighting , Furniture ,
- Carpeting , Fabricsetc
- Preparing Purchase order
- Procurement

Graphics Design and Wayfinding

- Logo Design
- Environmental Design
- Signage
- Printing and Fabrication Administration



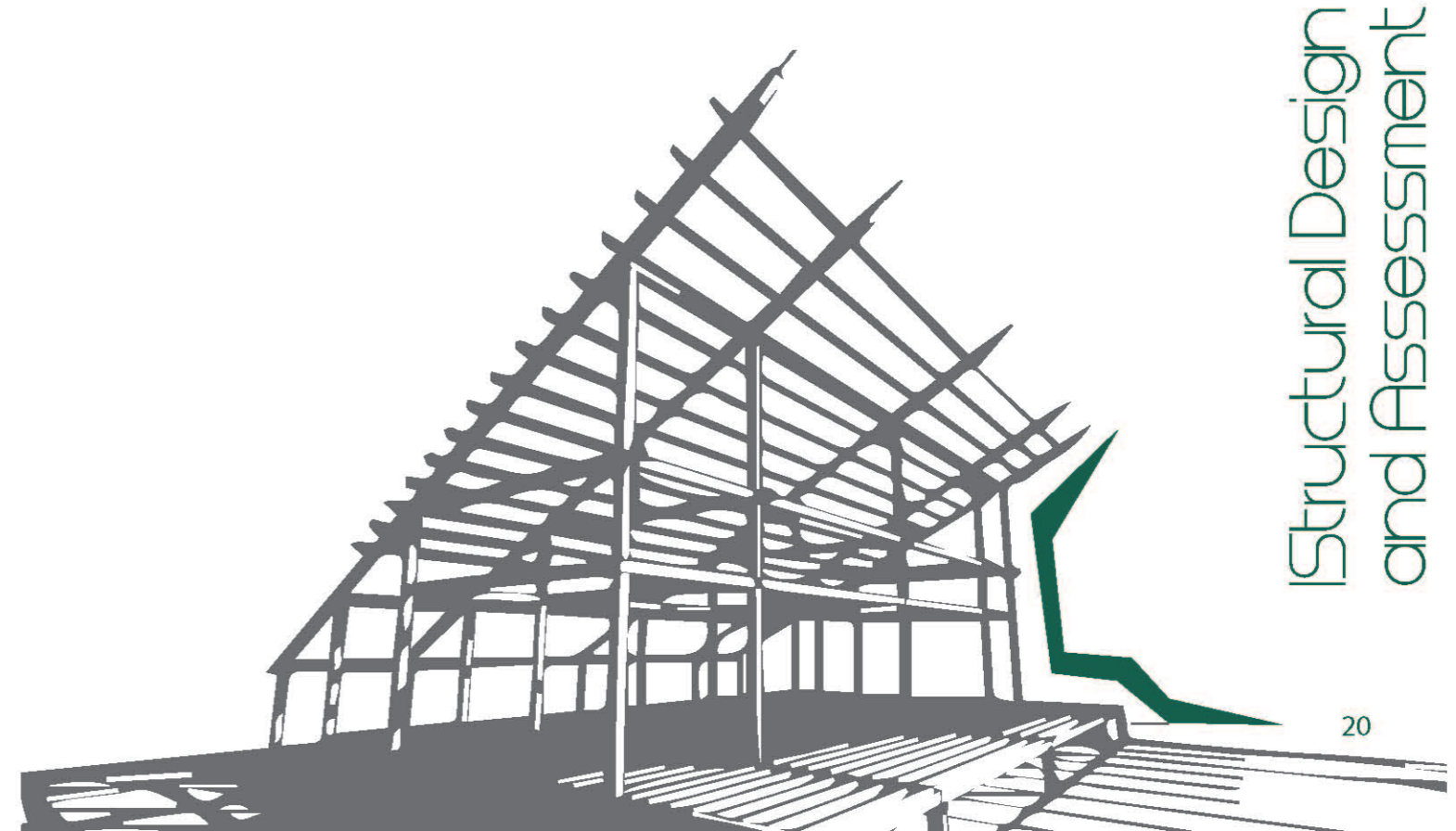
Sustainability Planning:

- Climate action planning
- High-performance buildings
- Low-impact landscapes
- Water Resources Planning
- Renewable Energy Siting
- Ecological Restoration
- Natural Resources Management
- Land Use Planning
- Sustainable Communities
- Transit Oriented Development
- Transit Line Siting
- Sustainability Modeling



Structural Design and Assessment :

- Design of Reinforcement Concrete buildings.
- Design of Post Tension Concrete buildings.
- Complete structural design for project components.
- Prepare workshop drawings for most of the structural engineering
- Construction Management and Supervision.
- Analytical modeling of different structural systems using finite element.
- Modeling utilizing different computer packages.
- Seismic analysis and earthquake design of structures.
- Repair and strengthening of buildings.
- Field Investigation and data collection.
- Preliminary design and feasibility studies.
- Prepare tender documents, cost analysis and specifications.



Electrical Design :

Codes, Standards and references

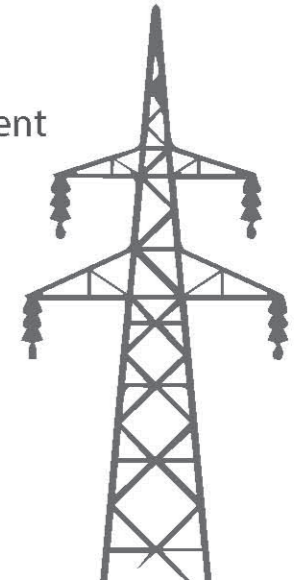
- The electrical design, manufacture, installation practice and testing of the materials, plant equipment and systems shall conform to the applicable requirement of the following regulations:
- International Electro-technical Commission (IEC)
- International Standardization Organization (ISO)
- Local codes (KSA).
- British standard Specifications (BS)
- National Electrical Codes (NEC)
- National Electrical Manufacturing Associations (NEMA)
- Association Of German Engineers Specifications (VDE)
- German Industry Standards (DIN)
- Illumination Engineering Society (IES)

SCOPE OF WORK

- The electrical design and specifications for the project shall consist of the following:
- Distribution transformer.
- LV distribution boards
- Stand-by Generator and UPS
- Wiring method & cable route.
- Lighting and central control system
- Power & socket outlets.
- Earthing (grounding) system.
- Lightning protection .

Low current systems

- The special system shall include the following light current systems:
- Fire Alarm System
- Telecommunication system Networks
- Closed-circuit Television (CCTV) Security system
- Master Antenna TV (MATV)
- Automation system



Our projects



King Abdulaziz International Airport

(JED) opened in 1981 on a site 12 miles
(19km) north of Jeddah in Saudi Arabia



Our Scope

Work shop drawing into the different Series:

- Builder`s Work .
- Wall Finishes.
- Wet Areas of the Passenger Terminal Building – PTB- All the zones At all levels –Blue up
- All Passenger Terminal Building Zones & Levels.
- Service Buildings
- Bridges & Nodes
- The Main Control Tower- G100- (Flooring-Ceiling- Builder –wall finishes)

DESIGN FEATURES:

The building symbolize a gate for a sustainable district, consisting of two wings separated by the belt line with interconnecting bridge vegetation is used to create a pleasant internal environment , and soften the transmission between the different users .



Main Concept:

Generating a sustainable environment through the integration with nature in and out the building, to be a gate to our main project “institute of Sustainable Development “ as well as agate to a sustainable district, generated with performance idea and sustainable goals.



Design and build contract :

Following its appointment, SBG appointed a consultancy team led by UK engineering firm Atkins and included major sub consultants Arup and Areen Aviation to develop and validate the design under DAH supervision.

Major sub-contractors appointed by SBG at the same time included local firm Roots Steel, Dutch baggage handling specialist Vanderlande, German Spaceframe roof structure expert Mero, UK roofing specialist Lakesmere, Canadian APM makers Bombardier, locally based IT experts Innovative Contractors for Advanced Dimensions (ICAD), Saudi MEP installers Advanced Vision, Saudi Granite, Kone lifts, escalators and travelators among many others.

With a demanding schedule SBG's approach was to move rapidly on all construction fronts with the buildings taking physical shape extraordinarily quickly.

Sustainable Development Organization Headquarter SDO

Institute of Sustainable Development

Location: Atlanta, Georgia

Latitude: 33.79 N

No,of storeys: 35+ Basement Floor

Site area: 5824 m²

Foot Print area: 118773 m²

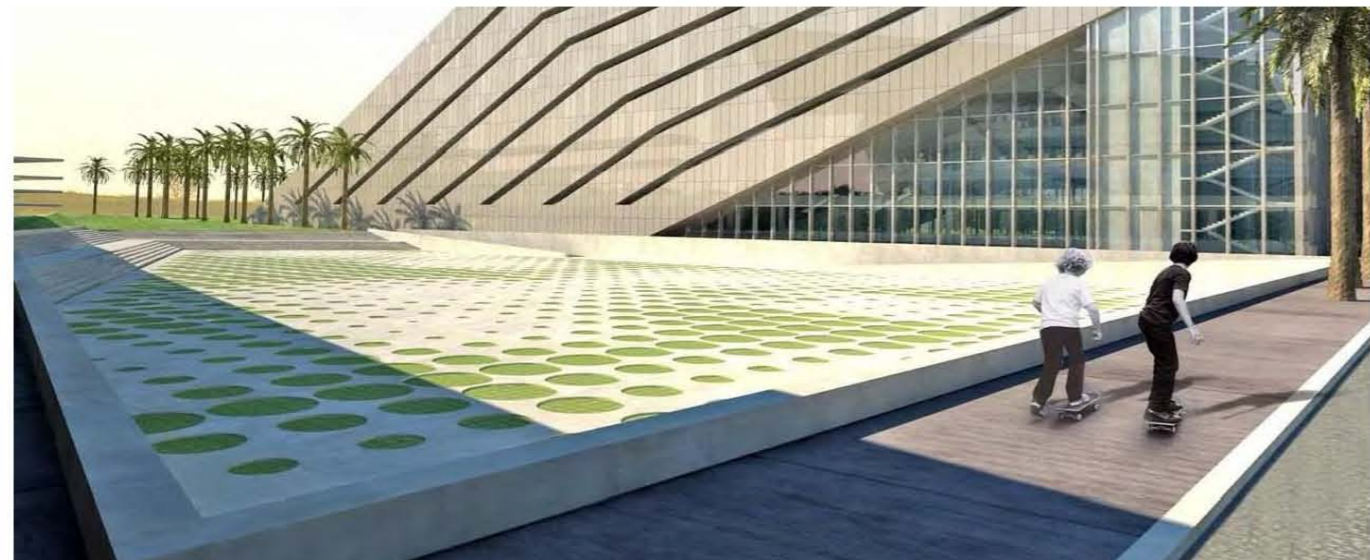
Foot Print area ratio: 20%

Main Concept

Generating a Sustainable environment through the inergetion with nature in and out the building,to be a gate to our main project (institute of sustainable Development) as well as a gate to a sustainable distrect generated with performance idea and sustainable goals.



Our projects



Our projects





Hospitality Architecture

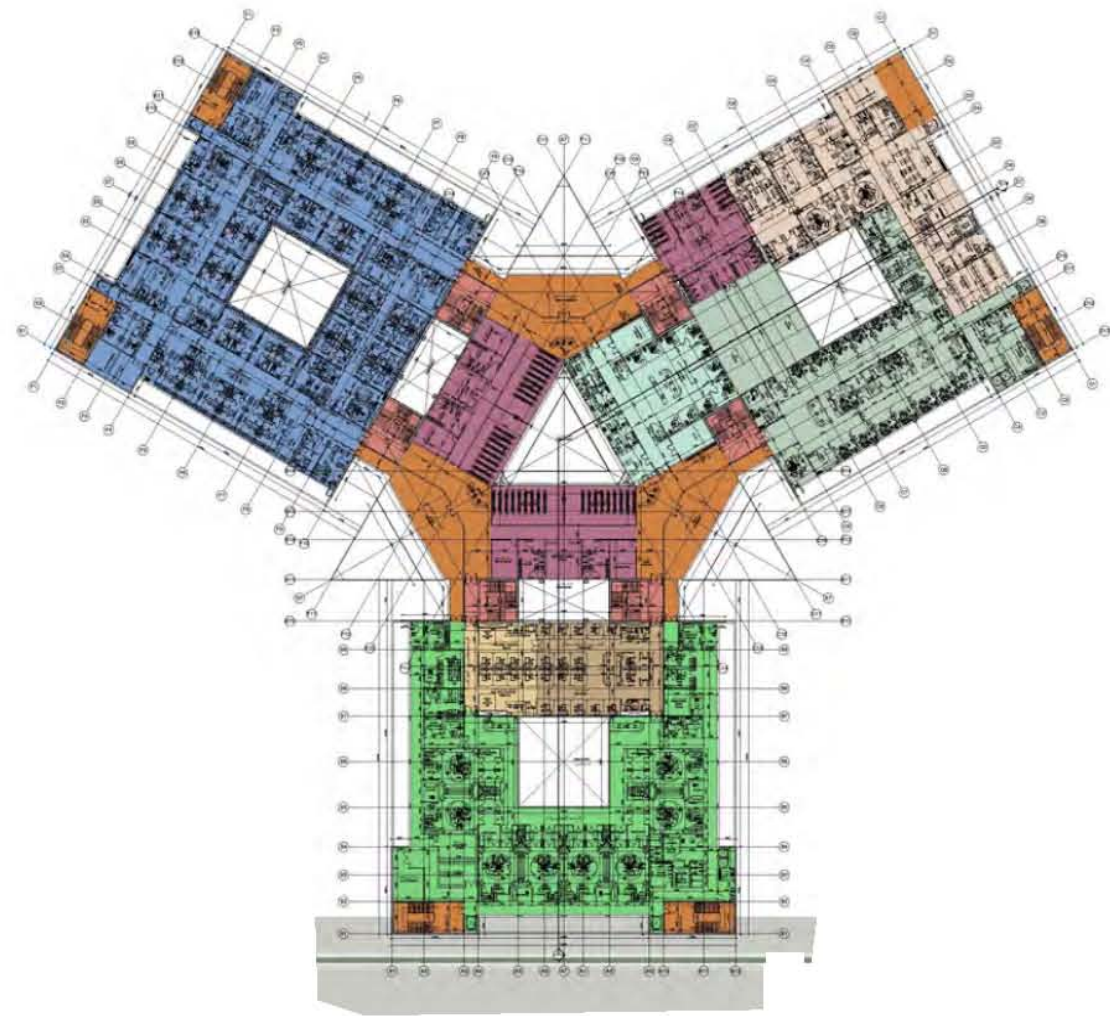
- Design for 60 bed psychiatric hospital & drug addiction treatment center

Design for the core building for 400- bed hospital , including all medical services (OR dept. , ICU dept. , radiology DEPT, maternity dept. , NICU... Etc)



Armed Forces Hospital ,Gazan
Construction of 100
beds Hospital.







Egypt Air Cairo Airport



Our projects

CAIRO INTERNATIONAL AIRPORT

- Terminal 1 Hall Lounge
- Seasonal Hall Lounge

Terminal 1 Food Court



Seasonal Hall Lounge





ASSIUT INTERNATIONAL AIRPORT

- Transit Restaurant
- Arrival Hall Lounge
- Travel Lounge outside the customs office
- International Travel Hall Cafeteria
- Internal travel lounge
- VIP travel Lounge

Transit Restaurant



Internal Travel lounge



VIP travel Lounge



Riyadh Palace

Modern Islamic Style







Corporate Interiors

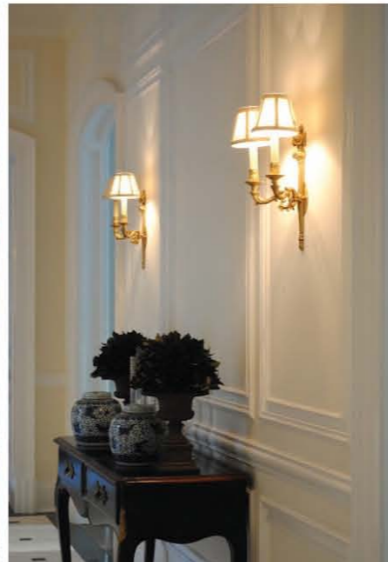








Residential Interiors









STRUCTURE DESIGN

High Rise Towers Aljabria Clinic-Kuwait



Compound
Garden city- Ajman -UAE



Al Fintass
Hotel



EFG - Hermes- Cairo -Egypt



Sidi Abdelrahman Resort- Egypt



Cairo Festival City mall
participating in the
Construction process.



Address:

Block 3, No.1, Area 9, Nasr City, Cairo , Egypt.

Telephone: +2 02 24715018

Cell: +2 01001553085

Fax: +2 02 24715018

P-mail: dr.meselhy@waveegypt.com

E-mail: admin@waveegypt.com